

# DOORS AND FRONTS FOR FACTORY BUILT FIREPLACES





## DOORS AND FRONTS FOR FACTORY BUILT FIREPLACES

The fireplace is the heart of the room. Our custom built fireplace doors and fronts bring a new level of style to your fireplace that you and your family will enjoy for years.

All of our factory built doors offer more design options for your fireplace, whether it's a zero clearance (ZC) or a direct vent (DV) fireplace. Our most popular door models are offered in ZC versions to work with any factory built fireplace. Gas fireplaces feature sealed ceramic glass in the front which gets very hot during use and creates a safety hazard. Our line of Refresh Series screens bring safety and style to your gas fireplace.



### **Stiletto ZC**

A slim 7/8" frame works with any style of fireplace.







Legend ZC with window pane option in old world bronze.





**Moderne ZC - Slim Frame** | *Simple, brilliant geometry*

This sleek and contemporary design is so unique - even its name is special. The Moderne Series is the first contemporary custom fireplace door line that offers three unique door models. The Slim Fit Frame features a 1 13/16" door frame providing a larger viewing area.





**Moderne ZC - Original** | *Simple, brilliant geometry*  
The Moderne Original features a 3" door frame that appears to "float" in front of the fireplace.



**Odyssey ZC** | *Contemporary, modern look*  
The Odyssey features "minimal" design with frameless glass doors. The Odyssey is part of our Moderne Series and features a hidden frame that appears to "float" in front of the fireplace.



**All Glass ZC** | *Lighter, contemporary look*  
Our All Glass model offers a modern look with a lighter feel and presence.



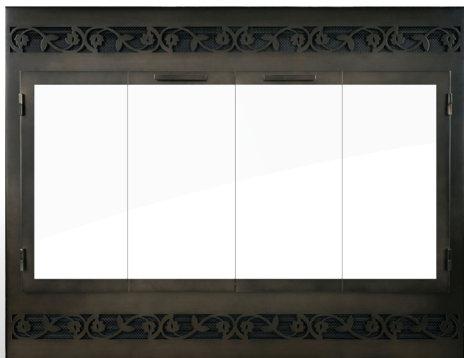
**Stiletto ZC** | *Simple, clean lines*  
The slimmest fit to keep the focus on your fireplace.





**Legend ZC** | *Unique, ultimate customization*

The Legend offers the most finishes and customization of all of our doors. The Legend can be custom built to fit almost any fireplace opening, no matter what shape or size. The Legend is available in a basic model or with any standard or custom window panes as shown.



**Legend ZC Deluxe** | *Unlimited style*

The Legend ZC Deluxe covers all of the exposed metal and vents of your fireplace to create a look that you will love for years. Featuring options like arched doors, hand crafted finishes and hammered edges, the Legend ZC Deluxe is almost unlimited in its custom designs.

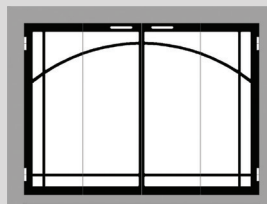


**Brookfield ZC Deluxe** | *Classic Design*

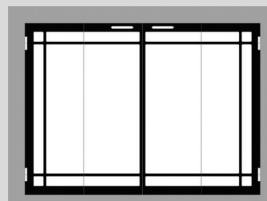
The classic look of one of our most popular door designs made especially for recirculating fireplaces.



## Optional Door Designs



Sunrise Window Pane



Window Pane





**Carolina ZC** | *Classic, time-honored design*

The Carolina ZC is made from a single piece of laser cut steel and available in our most popular finishes and styles. Custom built to your factory built fireplace dimensions, the Carolina ZC brings a new level of style and beauty to your fireplace.



**Brookfield ZC** | *Sleek, timeless symmetry*

The outer frame emphasizes simple, classic proportion.

**Phoenix ZC** | *Curved, decorative profile*

The Phoenix is our more decorative "mid-sized" aluminum frame. It's curved extrusion creates a soft aesthetic.

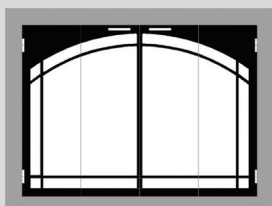


**Silhouette ZC** | *Subtle, round frame*

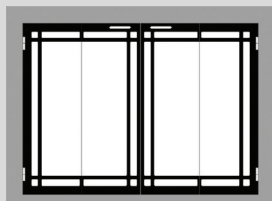
A subtle 1" rounded frame draws a fine line of style around your fireplace.

**Shadow ZC** | *Sleek, stepped detail*

The Shadow's thin frame offers a perfect finishing outline around the edge of the fireplace, without distracting from the focal point.



Arch Window Pane



Mission Window Pane





**Milwaukee Forge ZC** | *Bold, Traditional Style*

The Milwaukee Forge collection is created by a master blacksmith. Using a coal fired forge, he bends, hammers and shapes steel by hand to create a fireplace door that honors the history of the craft.



**Blacksmith ZC** | *Rugged, regal texture*

A masterwork from the metal crafter's hand. A hammered finish over the entire frame recalls the ancient blacksmith's art.



**Napa Valley ZC** | *Ornate, Vineyard aesthetic*

Grapes and leaves bring the look of California's wine country to your fireplace.



**Madrid ZC** | *Strong, renaissance design*

Faux arch with window pane design and handcrafted hammered edges. The Madrid's robust 8" handles are hand twisted over a coal fired forge.





**Black Rock ZC** | *Strong, industrial inspiration*  
A perfect marriage of strength & beauty. The Black Rock features a 2" frame and unique layered and rivet detail and exclusive handles.



**Hammered Edge ZC** | *Ornate, textured detailing*  
Our Hammered Edge doors showcase decorative hinges with matching handle plates. The frame and door panels feature hand hammered edges created on a century old anvil.



**Craftsman ZC** | *Refined, artisan steel*  
The Craftsman features a window pane design with decorative hinges and hammered edges.



**Banded Scroll ZC** | *Ornate, exquisite scrollwork*  
Layered bands around lavish scrollwork provide depth to your fireplace front. The Banded Scroll's elaborate design is perfect in a classical and elegant room.



**Oak Tree** | *Traditional, outdoor inspiration*  
Custom tree design highlighted with three dimensional leaf detail. Handles incorporate a twig design with acorn accents.



**Tuscany ZC** | *Classic, ornate pattern*  
The arched viewing area created by this Tuscan design is elegant and cozy. The aesthetics fit perfectly in a room with popular ivy or filigree patterns.





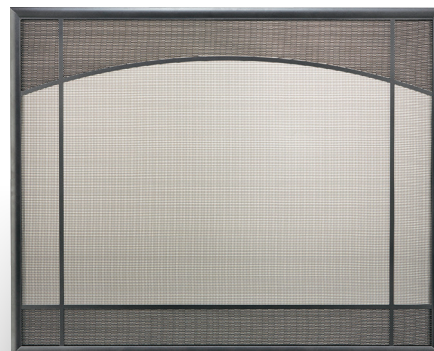
**Prairie DV** | *Bold and linear*

The Prairie DV offers a bold window pane design on operable doors with midwestern architectural design cues.



**Refresh DV Doors**

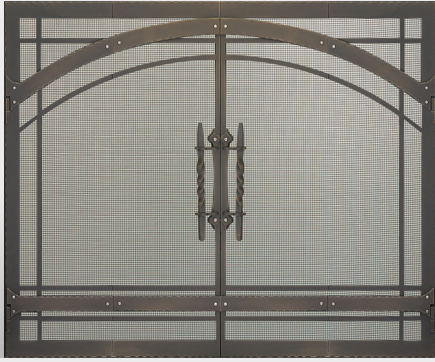
Refresh DV Doors feature mesh panel doors that provide an extra layer of protection from the hot glass of gas fireplaces. The operable doors allow access to the fireplace controls when needed.



**Refresh DV Fronts**

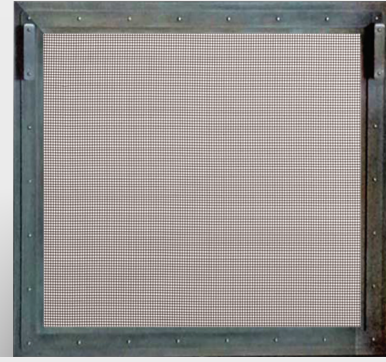
Refresh DV fronts are available in a variety of styles offering new aesthetic treatments to your fireplace and protection from hot glass.





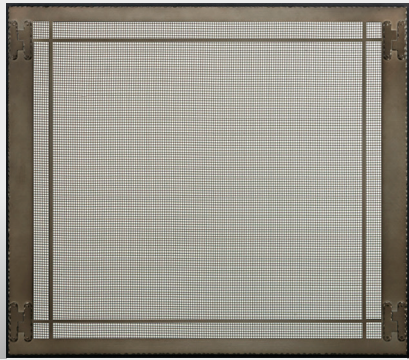
**Madrid DV** | *Strong, renaissance design*

Faux arch with window pane design and handcrafted hammered edges. The Madrid's robust 8" handles are hand twisted over a coal fired forge. Shown with operable doors.



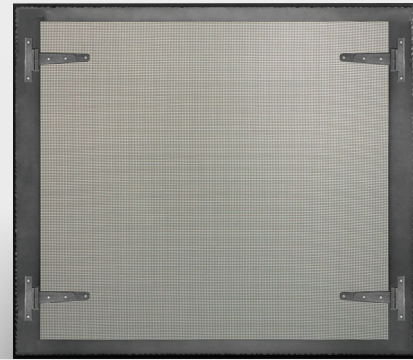
**Black Rock DV** | *Rugged beauty & safety*

The Black Rock DV is the perfect combination of strength & beauty with custom rivet detail and custom handles.



**Craftsman DV** | *Refined, artisan steel*

The Craftsman DV features hammered edge detail that is created by hand and a traditional window pane design.



**Hammered Edge DV** | *Ornate, textured detailing*

Our Hammered Edge DV showcases decorative hinges. The frame features hand hammered edges created on a century old anvil.



**Multi-Sided** | *Corner and peninsula solutions*

Stunning from any angle, our patented all-glass multi-sided enclosures eliminate vertical frames for a seamless appearance.



**Complete, Hearth Solutions** | *Tool Sets & Log Baskets*

Our Carolina and Premier Design hearth accessories match our most popular fireplace doors in finish and design.



## Handle Options



Simplicity



Contemporary



Rugged Steel



Birdcage



Infinity



Square

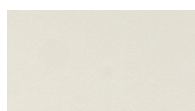


Classic

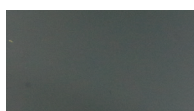


Knobs

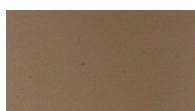
## Glass Color Options



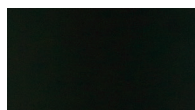
Clear



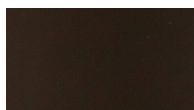
Grey



Bronze



Black



Solar Cool Bronze

## Louver Designs



Open



Slot



Square



Prairie



Vintage



Keystone



Madrid



Scroll



Tuscan



Oak Leaf

## Mesh Options

- Mesh Curtain
- Twin Gate Mesh
- Single Panel Gate Mesh

## Door Configurations

- Twin (Cabinet)
- Tracked Bi Fold (Aluminum Only)
- Fold Back Bi Fold
- Gate Mesh No Glass (Twin Only)

## Finish Options

Doors are available in a wide variety of standard and premium finishes. Please visit [www.glassfireplacedoors.com](http://www.glassfireplacedoors.com) or your Design Specialties dealer for a complete palette of colors and finishes for your door.



Design Specialties, LLC • 11100 W Heather Avenue • Milwaukee, WI 53224  
[www.glassfireplacedoors.com](http://www.glassfireplacedoors.com)